

Goulburn Regional Art Gallery

# Afternoon Art Club at Home

## Ben Quilty



Goulburn Regional Art Gallery is supported by the NSW government through Create NSW

# About Afternoon Art Club at Home

The Afternoon Art Club at Home has been developed to support all of our art clubbers during the COVID-19 closures. It is prepared by Janet Gordon, Outreach Officer. Gordon has a Bachelor of Teaching (birth to 5yrs) and a Diploma in Children's Services (Centre based care), with 20 years experience in early childhood education. Gordon has several years experience in relief-teaching the afternoon art club at Goulburn Regional Art Gallery.

This Afternoon Art Club at Home explores Ben Quilty.

I find Quilty's work fascinating. I like the way the paint looks like it's just waiting to drip and has me staring at it in anticipation.

## Who was Ben Quilty?

Ben Quilty was born in Sydney in 1973 and now resides in Robertson, just up the highway.

After finishing high school, Quilty graduated from Sydney College of Arts at the University of Sydney with a Bachelor of Visual Arts in Painting. He didn't finish his studies there. He went on to study at Western Sydney University graduating with a Bachelor of Arts in 2002.

In 2011 Quilty was stationed in Afghanistan with soldiers from the Australian Defence force. He was employed as an official war artist and quickly sketched and painted the daily lives and struggles of the soldiers. Artworks from this time are part of the Australian War Memorial's National Collection.

Also in 2011, Quilty was the winner of the Archibald Prize with his portrait of Australian painter, Margaret Olley.

Quilty has works held in numerous institutional collections. Goulburn Regional Art Gallery have two in our permanent collection.



Ben Quilty at the opening of Goulburn Bustle in 2019

# Explore the Paintings

Here are four of Ben Quilty's paintings.



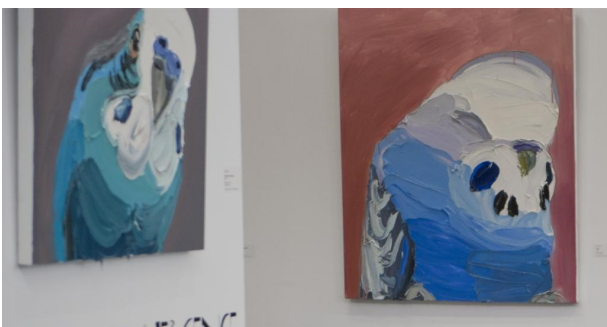
Ben Quilty, *Torana*, 2007 Goulburn Regional Art Gallery's permanent collection

**What's the first thing that you think of when looking at them?**

Use a coloured pencil to draw your thoughts.



Ben Quilty, *Skull Rorschach*, 2009. Goulburn Regional Art Gallery's permanent collection



Ben Quilty, A Convergence of Birds exhibition in 2011



Ben Quilty, *Hill End Landscape*, 2005.

# Thinking . . .

Express your ideas and thoughts in creative ways . . .

. . . write or draw what you're thinking

Ben Quilty's 2011 Archibald Prize winning painting

**Do you know who Margaret Olley is?**

was she a painter? a potter?

**What do you think about the colours  
used?**

Colourful, bright, pastel?



Ben Quilty with Margaret Olley posing in front of Quilty's portrait of Olley. Photo: Courier Mail

**ART**  
GALLERY  
**NSW**

If you'd like to find out more information about Margaret Olly,  
visit

[Art Gallery of NSW](http://www.artgallery.nsw.gov.au)

## **Create . . .**

Create an art work based on you favourite Quilty painting . . . .

. . . . Draw a portrait? paint a car? sculpt a budgie? . . . .

**Take some time to sketch you ideas and a plan here first**

We'd love to see your completed artworks. You can email a photograph to [artgallery@goulburn.nsw.gov.au](mailto:artgallery@goulburn.nsw.gov.au) or tag us on Instagram or Facebook